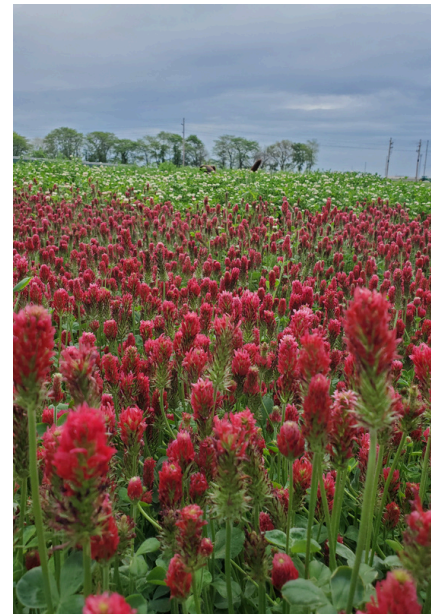


Crimson Clover

Crimson Clover is a popular choice for producers looking for a cover crop species that is capable of fixing nitrogen. Crimson is easy to establish and can offer many benefits including: nitrogen fixation, forage value, weed suppression, pollinator attraction and more!

Crimson tends to be one of the earliest blooming legumes, meaning that it fixes nitrogen earlier in spring than other varieties.



Seeding Method: Broadcast, aerial or drill

Seeding Rate: 6-15# /acre in a mix

Seeding Depth: 1/2"

Seeding Dates: 8/15 - 10/10

Notes: Use an inoculant to help fix more N! Watch for hard seed.